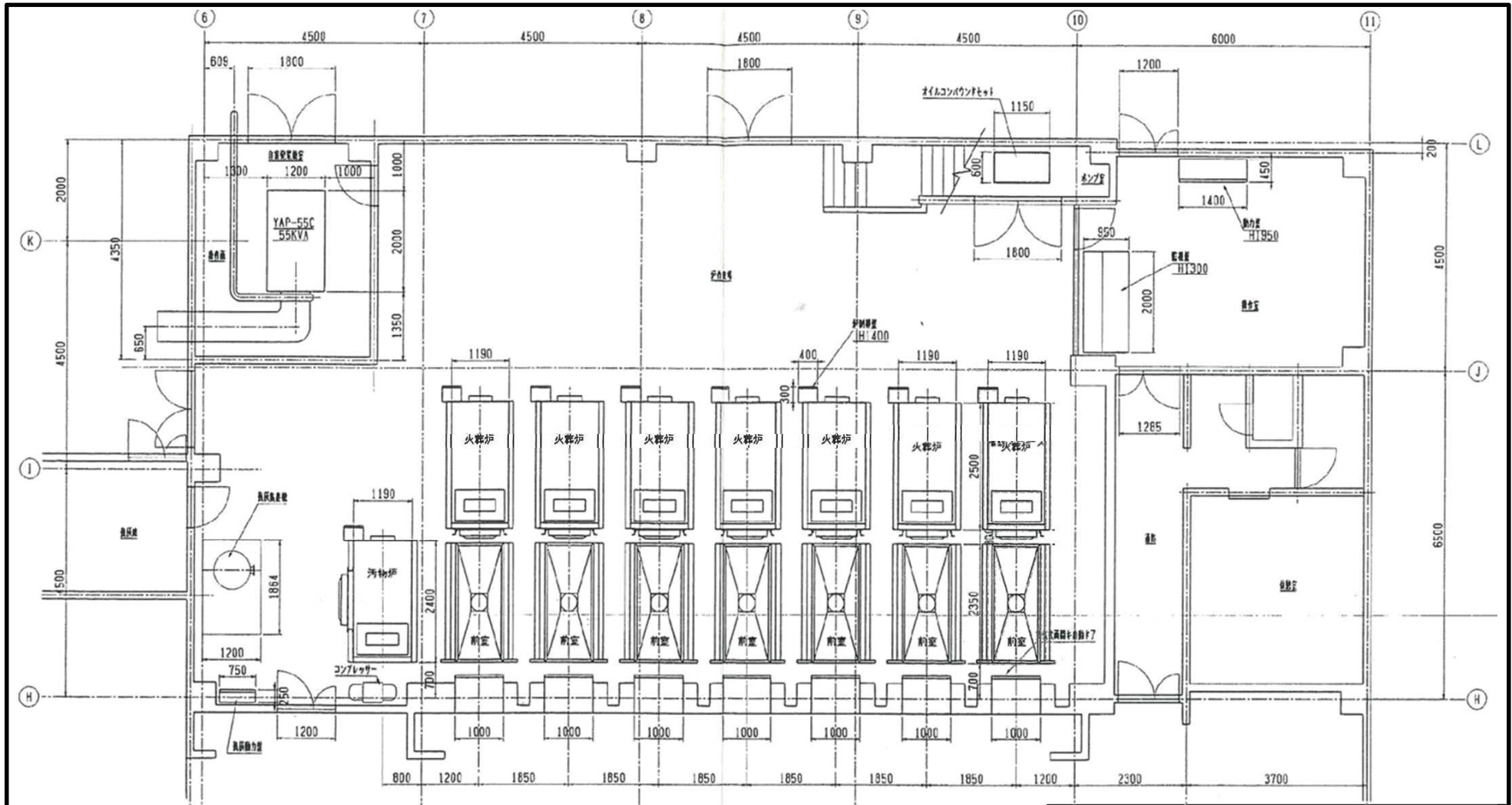


火葬業務委託

2/6

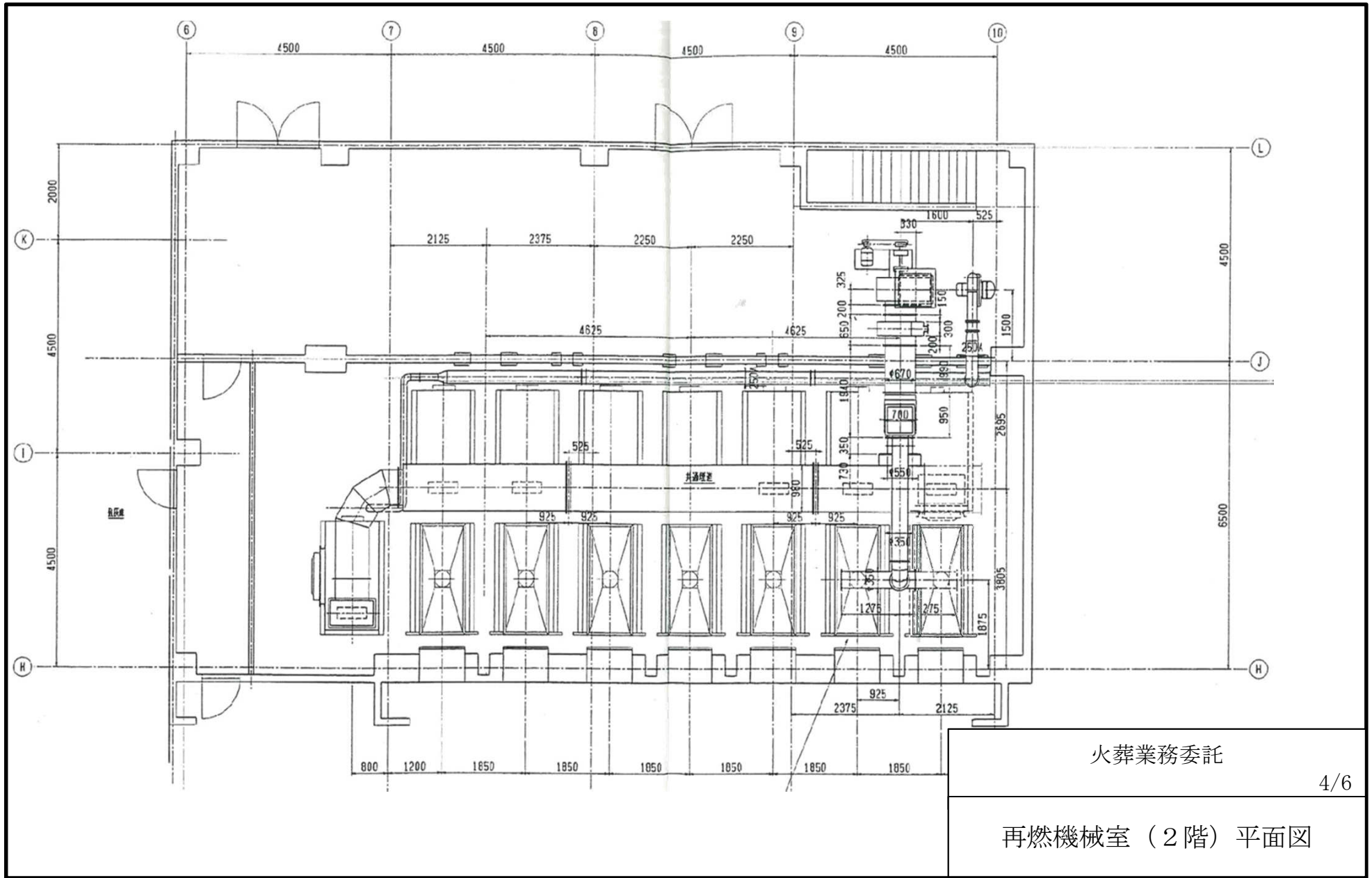
敷地配置図



火葬業務委託

3/6

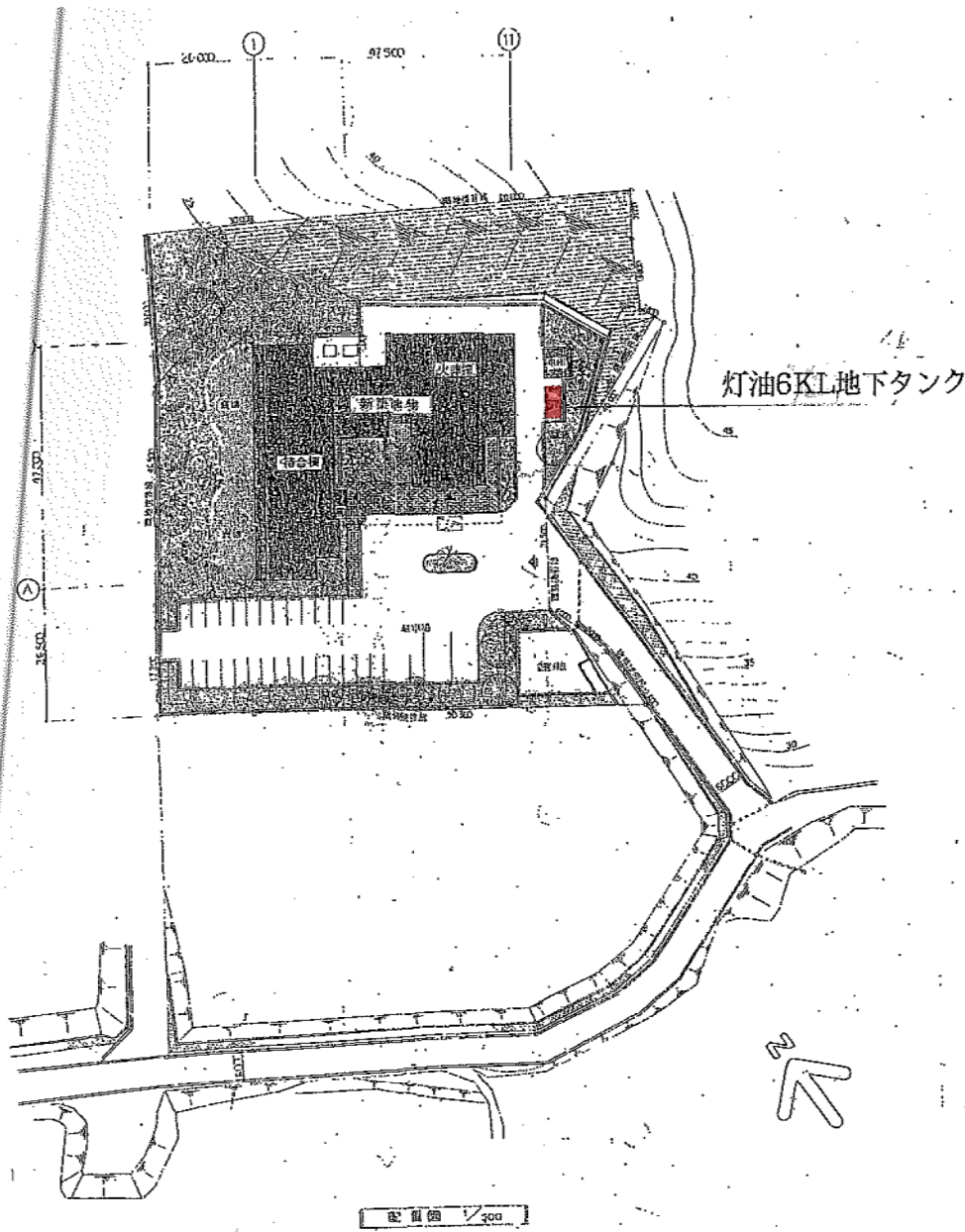
炉作業場（1階）平面図



火葬業務委託

4/6

再燃機械室 (2階) 平面図

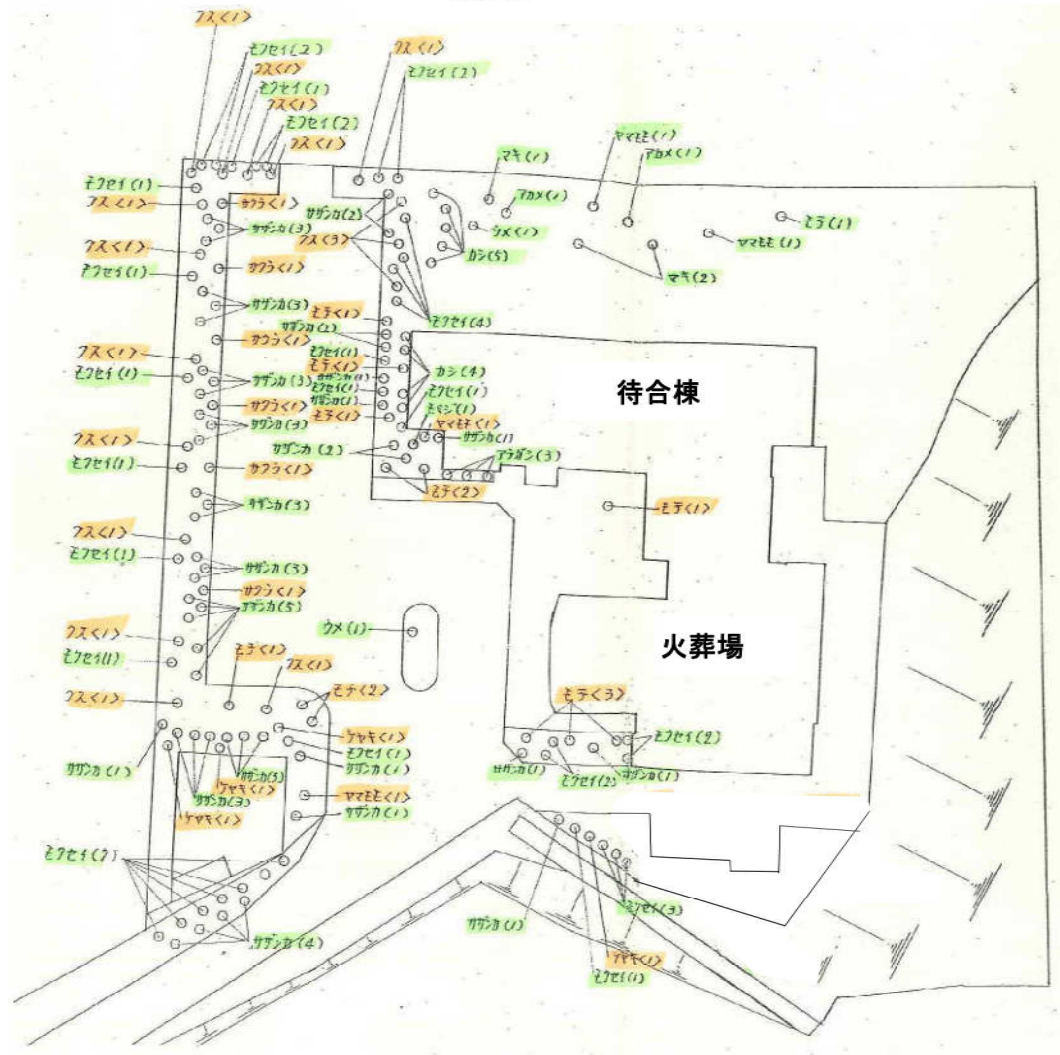


地下タンク及び埋設配管漏洩検査業務
1/3

施設位置図

立木等管理施工平面図

(斎場)



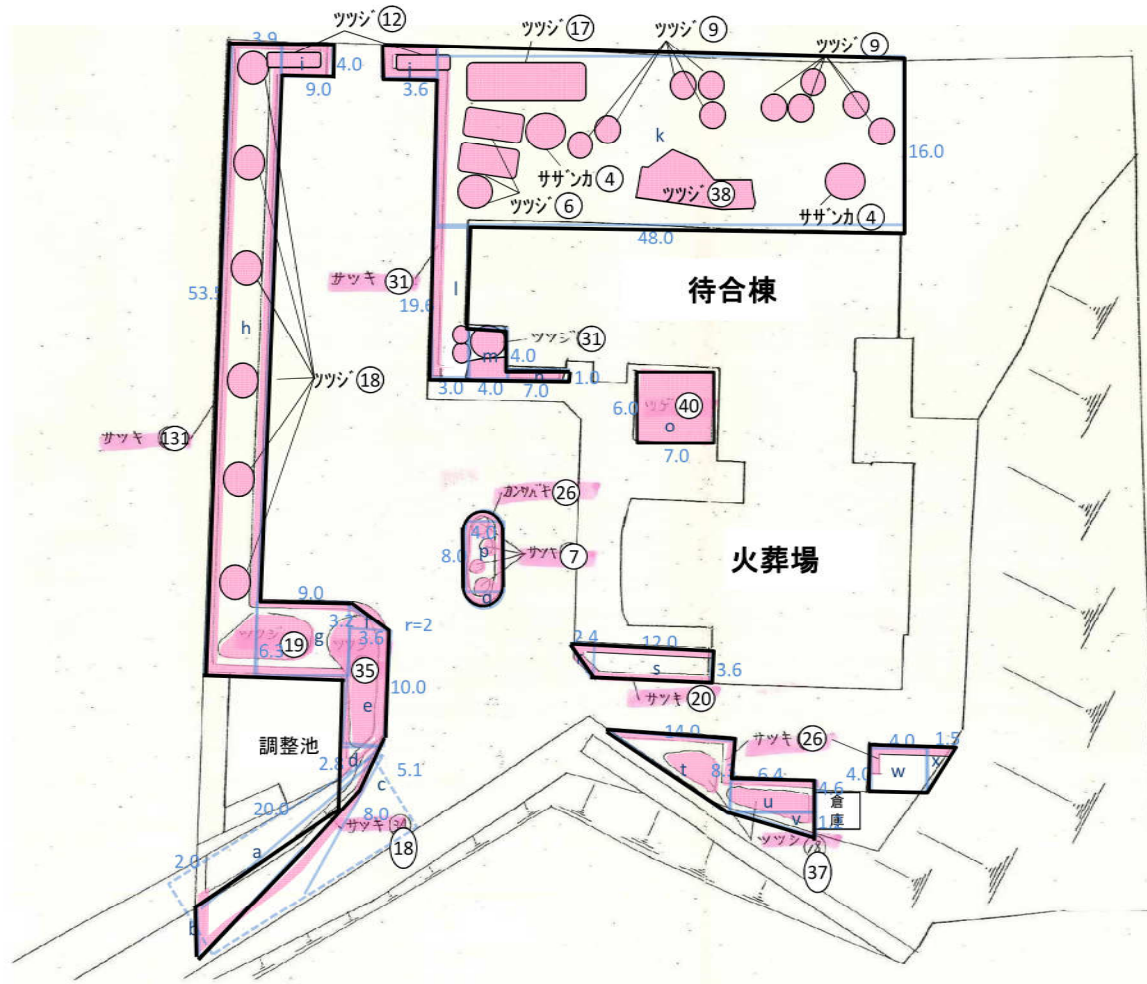
立木管理(せん定)

- 高木(40本)
- 中低木(108本)

緑地管理業務委託

立木等管理施工平面図

(斎場)



立木管理(せん定)

寄せ植え 528m²

a	...	20.0	×	5.1	=	102.0
b	...	2.0	×	5.1	÷	2 = -5.1
c	...	8.0	×	5.1	÷	2 = -20.4
d	...	3.6	×	2.8	÷	2 = 5.0
e	...	3.6	×	10.0	=	36.0
f	...	3.6	×	3.2	÷	2 = 5.8
g	...	9.0	×	6.3	=	56.7
h	...	3.9	×	53.5	=	208.7
i	...	9.0	×	4.0	=	36.0
j	...	3.6	×	4.0	=	14.4
k	...	48.0	×	16.0	=	768.0
l	...	3.0	×	19.6	=	58.8
m	...	4.0	×	4.0	=	16.0
n	...	7.0	×	1.0	=	7.0
o	...	7.0	×	6.0	=	42.0
p	...	4.0	×	8.0	=	32.0
q	...	2 ²	×	π	=	12.6
r	...	2.4	×	3.6	÷	2 = 4.3
s	...	12.0	×	3.6	=	43.2
t	...	14.0	×	8.3	÷	2 = 58.1
u	...	6.4	×	4.6	=	29.4
v	...	6.4	×	1.2	÷	2 = 3.8
w	...	4.0	×	4.0	=	16.0
x	...	1.5	×	4.0	÷	2 = 3.0
1533.3						

空地管理

1, 533 - 528 = 1, 005

空き地 = 1, 005m²

緑地管理業務委託

